

**AMENAGEMENT D'UN QUARTIER, DUBLIN**  
ANNE LACATON & JEAN PHILIPPE VASSAL

**Site**

Dublin, Irish Glass Bottle site

**Date**

Concours 2007

Non lauréat

**Programme**

Sur un site de 10ha :

surface construite : 397 000 m<sup>2</sup>

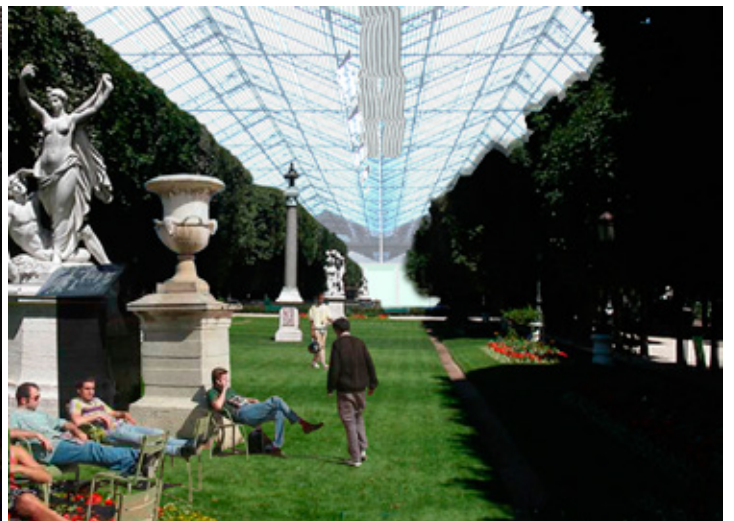
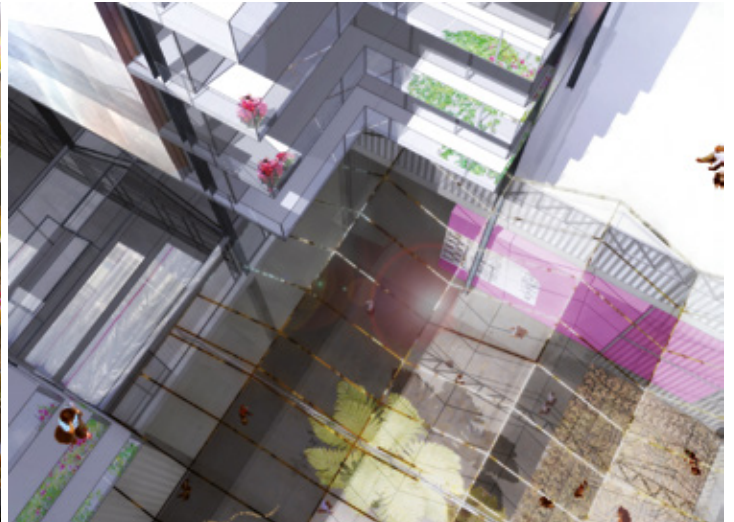
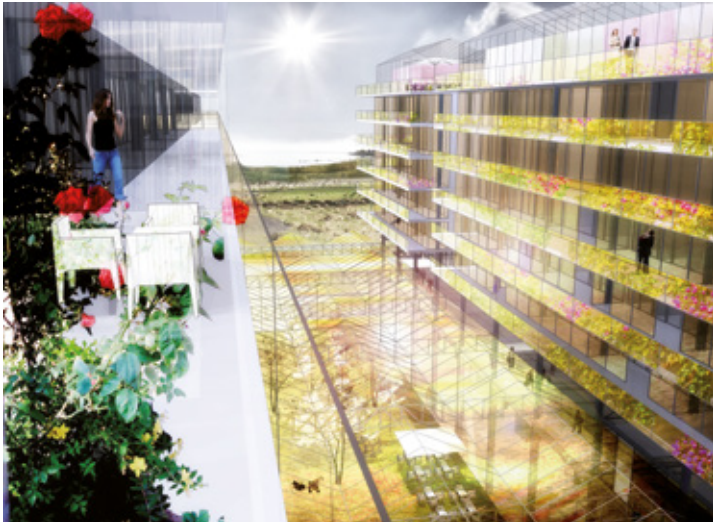
habitat : 245 000 m<sup>2</sup> (2 100 logements)

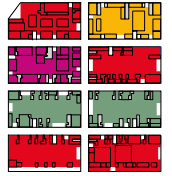
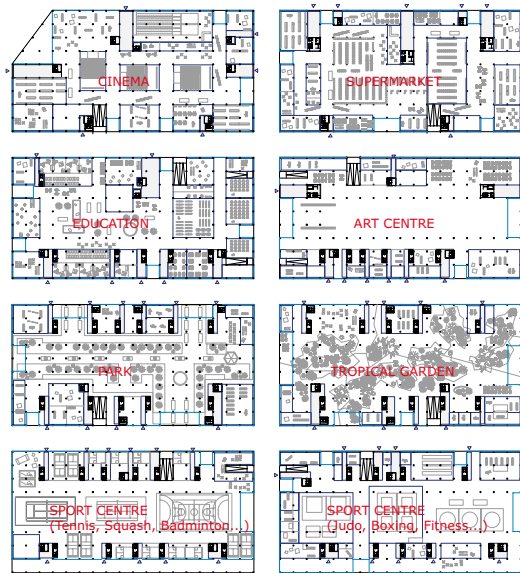
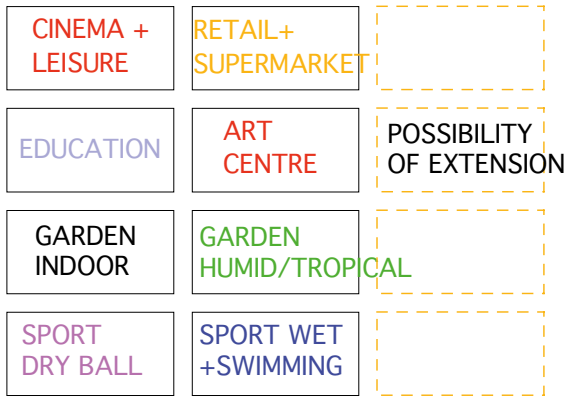
surfaces commerciales : 13 900 m<sup>2</sup>

bureaux : 46 000 m<sup>2</sup>

équipements sportifs couverts, jardins publics sous serres

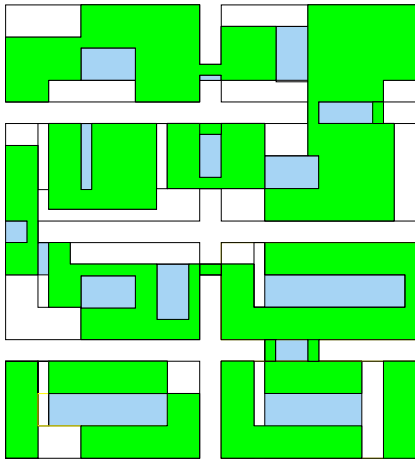
parking (4 180 places)





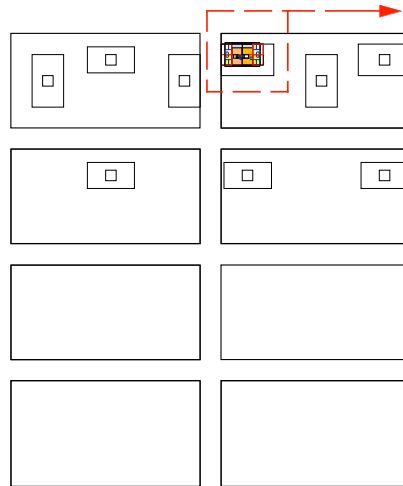
**GROUND FLOOR**  
LEVEL 0 (6,70 m OD)  
PROGRAMS AND FUNCTIONS

**GROUND FLOOR - INDOOR PUBLIC SPACES**  
LEVEL 0 - 6,70 m OD



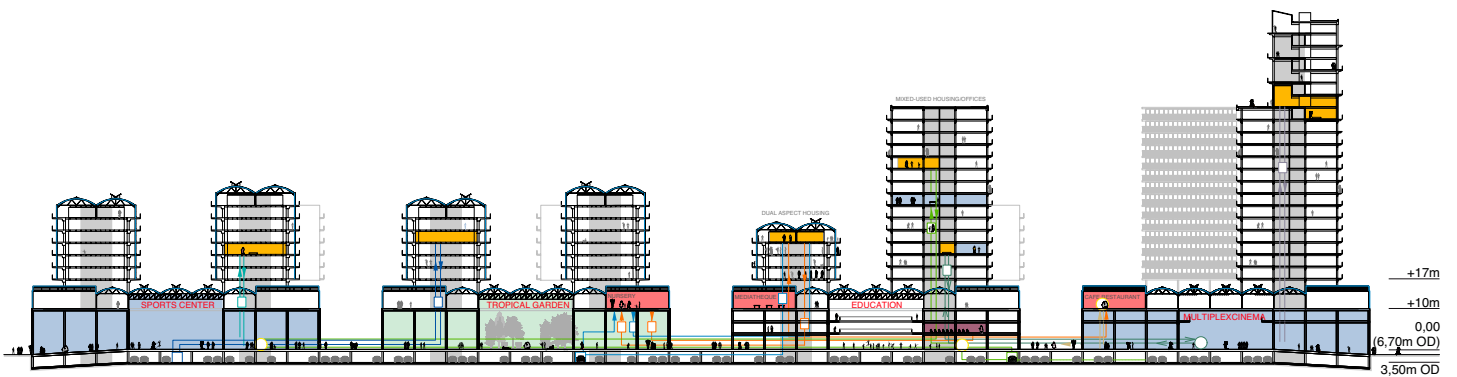
■ FLOOR AREA COVERED BY GREENHOUSES  
■ HOLES COVERED BY GREENHOUSES (NATURAL LIGHT FOR GROUND FLOOR)

**LEVEL +10 COVERED BY GREENHOUSES**



**HOUSINGS**  
1 BUILDING  
20 HIGH FLATS DUPLEX  
SUPERPOSED TO ONE  
OF THE 15 LEVELS BUILDINGS  
LEVEL 59m TO 77m

**RESIDENTIAL**  
FROM LEVEL +59



**SOUTH NORTH SECTION**