

**HALL D'EXPOSITION, PARIS NORD-VILLEPINTE**  
ANNE LACATON & JEAN PHILIPPE VASSAL  
CYRILLE MARLIN (paysagiste)

**Site**

Parc des expositions, Paris Nord - Villepinte

**Date**

Livraison fin 2006

**Maître d'ouvrage**

SIPAC Paris

**Programme**

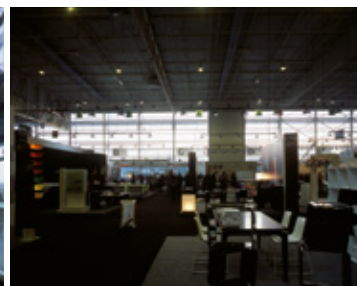
Hall d'exposition

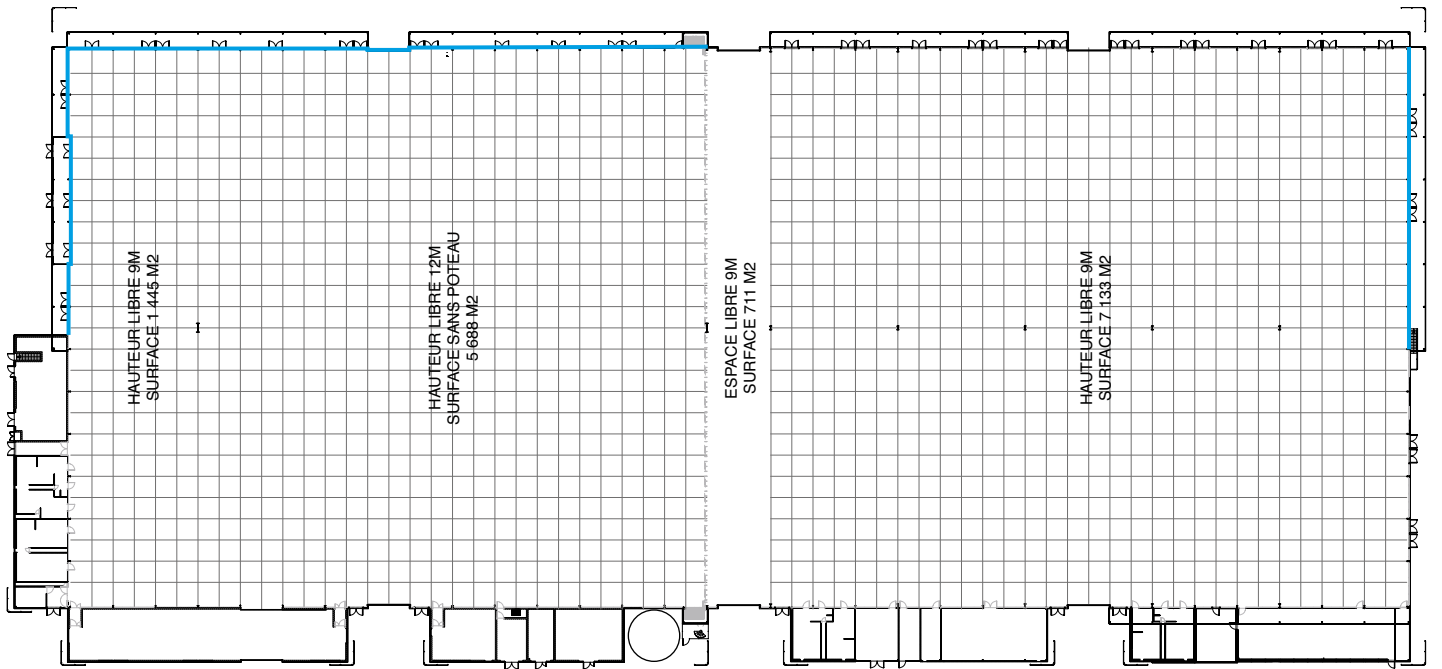
**Surface**

16 500 m<sup>2</sup> hors oeuvre net

**Coût**

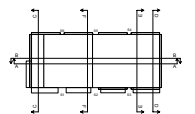
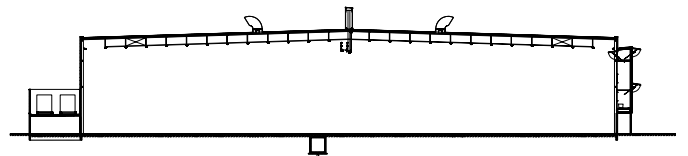
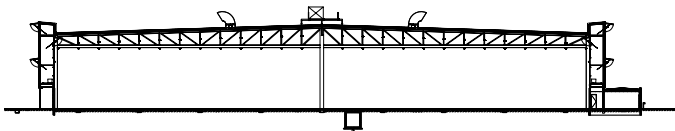
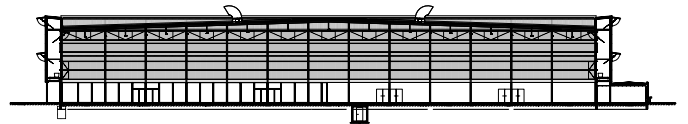
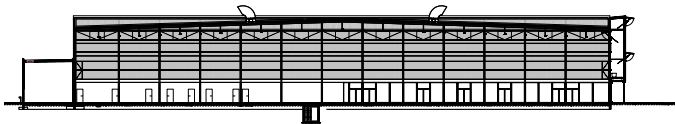
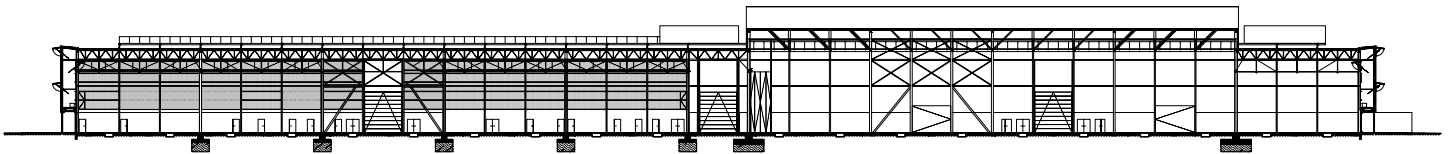
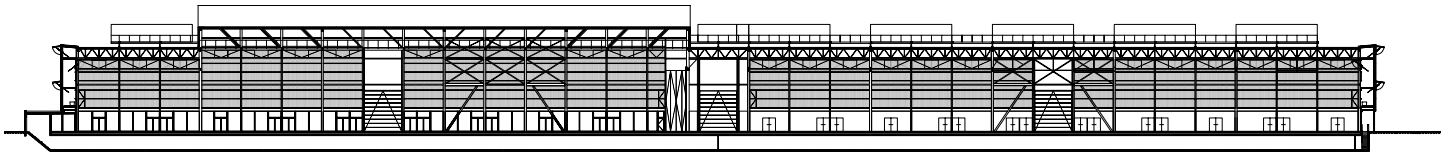
15 M € HT (val. 2007)





Passage vitré

Surface générale du hall :



Projet

